

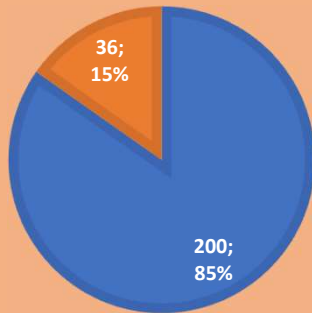


The LMA t/a the OPPASA means the industry in which employers and their employees are engaged in the sale, and/ or renovation, and/ or servicing, and/ or assembly during repair of Small Plant and Equipment, for example, lawn and garden tools and equipment, small farming tools and equipment, small workshop tools and equipment, small cleaning tools and equipment and small forestry equipment.

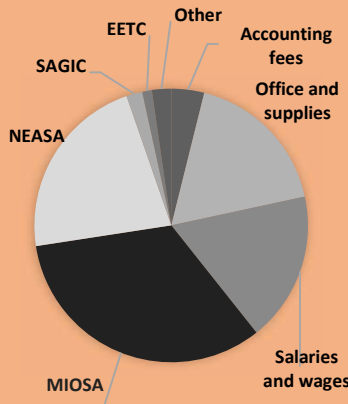
ANNUAL REPORT

# 2021

## REPRESENTATION OF THE INDUSTRY



## EXPENCES



## How we operate

The 4th and 5th industrial revolution have had a great impact on how we operate, and the Corona virus pandemic boosted these variations in operation. The constitution of the LMA/OPPASA prescribes how we should operate as an association and for this reason it is necessary to update the constitution.

## Equipment and engine training

Get your staff certified!!

The OPPASA has an active EETC membership account. This means that you as Dealer or associate has preferred pricing. You also gain free access to all EETC's online course content and electronic study guides (valued at over \$400).

## Rates and wages

Proverbs 15:22 AMP

Without consultation and wise advice, plans are frustrated, but with many counsellors they are established and succeed.

We, the members of the OPPASA follow this advice by designing the OPPASA web site in a way that encourages collaboration between members in matter like rates and wages.

## FINANCIAL REPORT

When time are tuff and historic habits proves to be destructive in the future of the environment, we find ourselves we need to change our habits or our environment, and this is the case with OPPASA. To survive the OPPASA needs to increase membership by 80% (28 members) or decrease our expenses by 20%. Spending the available funds now to create a sustainable environment now would ensure a more certain future platform to grow from.

Year	2021	2022	2023	2024
<b>Income</b>	R 292 760,00	R 292 760,00	R 292 760,00	R 292 760,00
<b>Expencc</b>	R 355 878,00	R 355 878,00	R 355 878,00	R 355 878,00
<b>Proffit/loss</b>	-R 63 118,00	-R 63 118,00	-R 63 118,00	-R 63 118,00
<b>Balance</b>	R 148 726,00	R 85 608,00	R 22 490,00	-R 40 628,00

